

Cable Accessories for Microinverter of HMS Series



AC Trunk Cable, 12/10 AWG Cable

AC Trunk Cable is used to connect the microinverter to distribution box. The Trunk Connector on the AC Trunk Cable is evenly distributed at intervals, Hoymiles provides AC Trunk Cable with different AC Trunk Connector spacing.



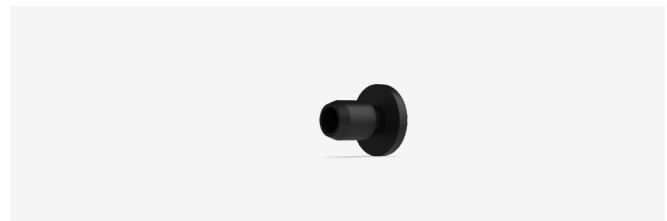
AC Trunk Connector

The AC Sub Connector of the microinverter can be inserted into the port of the AC Trunk Connector. Plug and play connectors speed up and simplify installation.



AC Trunk Port Cap

Used to protect vacant AC Trunk Port.



AC Trunk End Cap

Used to protect the cable port of AC Trunk Connector at the end of the AC branch.



AC Trunk Port Disconnect Tool

Used to disconnect the connection between the microinverter and the AC Trunk Connector.



AC Trunk Connector Unlock Tool

Used to unlock the AC Trunk Connector upper cover so that the cable can be removed, replaced, and the AC Trunk End Cap installed.



DC Extension Cable

Connect the microinverter and the PV module when the distance between this two exceeds the original cable length.

Technical Specifications

| Model | | AC Trunk Cable | |
|---------------------------------------------------------|--------------|-------------------------|--------------|
| Main Parameters | | | |
| Cable type | 10 AWG | | 12 AWG |
| Rated voltage | | 600 V | |
| Cable outer diameter | 12.5±0.40 mm | | 11.1±0.30 mm |
| Ambient temperature range | | -40°C to +90°C | |
| AC Trunk Connector spacing | 4.2 m/2 m | | 1 m |
| Number of AC Trunk Connectors per Single AC Trunk Cable | 10/20 | | 40 |
| Single AC Trunk Cable length | 39.3 m/41 m | | 46 m |
| Compliance | | | |
| Product standard | | UL 44, UL 1277, UL 1581 | |
| RoHS compliant | | Yes | |

| Model | | AC Trunk Connector | |
|-----------------------------------|--|--------------------------------------------------|--|
| Main Parameters | | | |
| Pin number | | 2P+PE | |
| Rated current | | 32 A (Use 10 AWG/6mm ² copper cable) | |
| Rated voltage | | 300 V | |
| Contact resistance | | ≤5 mΩ | |
| Power frequency withstand voltage | | 1500V AC | |
| Over voltage type | | III | |
| Connection Parameter | | | |
| Applicable cable specification | | 12/10 AWG | |
| Applicable cable outer diameter | | 10 mm to 13 mm | |
| Cable connection type | | Screw pressing | |
| Sub connector connection type | | Crimping | |
| Mechanical Data | | | |
| Ambient temperature range | | -40°C to +85°C | |
| Dimensions (L × W × H mm) | | 150 × 40 × 110 | |
| Protection rating | | IP68 | |
| Flame resistance degree | | UL 94-V0 | |
| Compliance | | | |
| Product standard | | PPP 59015A:2013 ANSI/UL 6703-2017 | |
| RoHS compliant | | Yes | |

| Model | | DC Extension Cable | |
|---------------------------------|--------------------------------------|--------------------|---------------------------------------------|
| Cable | | | |
| Cable type | | PV1-F 1X4 | |
| Rated current | | 20 A | |
| Rated voltage | | Max.1800V DC | |
| Cable length | | 1 m | |
| Ambient temperature range | | -40°C to +90°C | |
| Product standard | | 2 PFG 1169/08.2007 | |
| DC Connector | | | |
| Manufacturer | Betteri | | Staubli |
| Type | BC03A, BC03B | | PV-KBT4/6II-UR |
| Rated current | 30 A | | 39 A (TUV), 30 A (UL) |
| Rated voltage | 1000 V DC (TUV), 600/1000 V DC (CSA) | | 1000 V DC (TUV), 1500 V DC (UL) |
| Rated impulse withstand voltage | 6000 V | | 12000 V |
| Over voltage category | | III | |
| Ambient temperature range | -40°C to +85°C | | -40°C to +85°C (TUV), -40°C to +75°C (UL) |
| Protection rating | IP67 | | IP68 |
| Flame resistance degree | | UL 94-V0 | |
| Product standard | EN 62852:2014 UL 6703 | | EN 62852 UL 6703 2PFG2330 CNCA/CTS0002-2012 |
| RoHS compliant | | Yes | |

Ordering Information

AC (Daisy Chain) Accessories

| Type | Model | Description |
|--------------------------------|-----------------------------------|--------------------------------------------------------------|
| AC Trunk Cable | AC Trunk Cable_40T_40L_12AWG-1m | 40 AC Trunks and 40 AC Cables (Per Cable Length 1m, 12AWG) |
| | AC Trunk Cable_20T_20L_10AWG-2m | 20 AC Trunks and 20 AC Cables (Per Cable Length 2m, 10AWG) |
| | AC Trunk Cable_10T_10L_10AWG-4.2m | 10 AC Trunks and 10 AC Cables (Per Cable Length 4.2m, 10AWG) |
| AC Trunk Port Disconnect Tool | AC Trunk Port Disconnect Tool | 1 AC Trunk Port Disconnect Tool |
| AC Trunk Port Cap | AC Trunk Port Cap | 1 AC Trunk Port Cap |
| AC Trunk Connector Unlock Tool | AC Trunk Connector Unlock Tool | 1 AC Trunk Connector Unlock Tool |
| AC Trunk End Cap | AC Trunk End Cap | 1 AC Trunk End Cap |

DC Accessories

| Type | Model | Description |
|--------------------------|----------------------|--------------------------------------------------------------------------------------------------------|
| DC Connector-F | BC03A-F-C24 | 1 DC Female Connector (Betteri) |
| DC Connector-M | BC03A-M-C24 | 1 DC Male Connector (Betteri) |
| DC Connector Unlock Tool | MC4_Con_Unlock | 1 DC Connector Disconnect Tool |
| DC Extension Cable | DC_Ext_Cable-1m | 1 DC Male Connector (Betteri), 1 DC Cable (Cable Length 1m, 12AWG) and 1 DC Female Connector (Betteri) |
| | Stau_DC_Ext_Cable-1m | 1 DC Male Connector (Staubli), 1 DC Cable (Cable Length 1m, 12AWG) and 1 DC Female Connector (Staubli) |